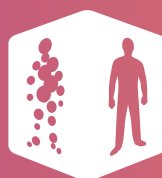


Stroke diagnosis suite

PERFSCAPE™ + NEUROSCAPE™



Olea
medical

Improved diagnosis for life™



Improved diagnosis for life™

Advanced software solutions for patient triage and management of acute stroke

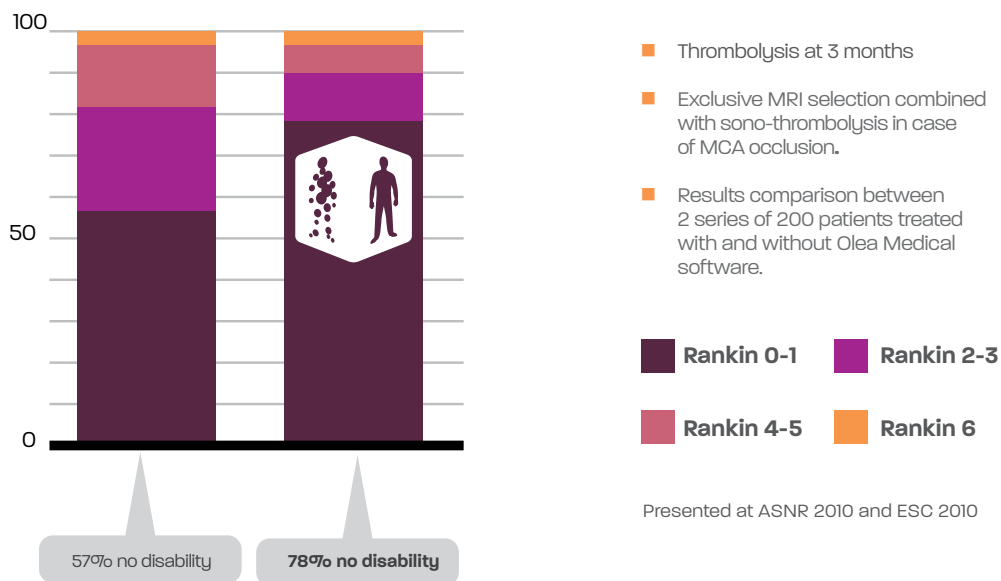
Fast, simple, FDA-cleared

The stroke diagnosis suite is comprised of **PERFSCAPE™** and **NEUROSCAPE™**, **semi-automatic post-processing software**. The combination of these two advanced applications allows physicians:

- to **triage their patients** with **unparalleled speed and accuracy**
- to finally use **MR perfusion for acute stroke**
- to make a treatment **decision in less than 2 minutes**. Non-interventional and interventional procedures can be **ideally assessed using the stroke diagnosis suite**

Clinical data

On **200 thrombolized patients** at La Timone University Hospital (Marseille, FRANCE), the **systematic use of Olea Medical's stroke diagnosis suite**, in a clinical setting, has **proven to be beneficial for patients**:



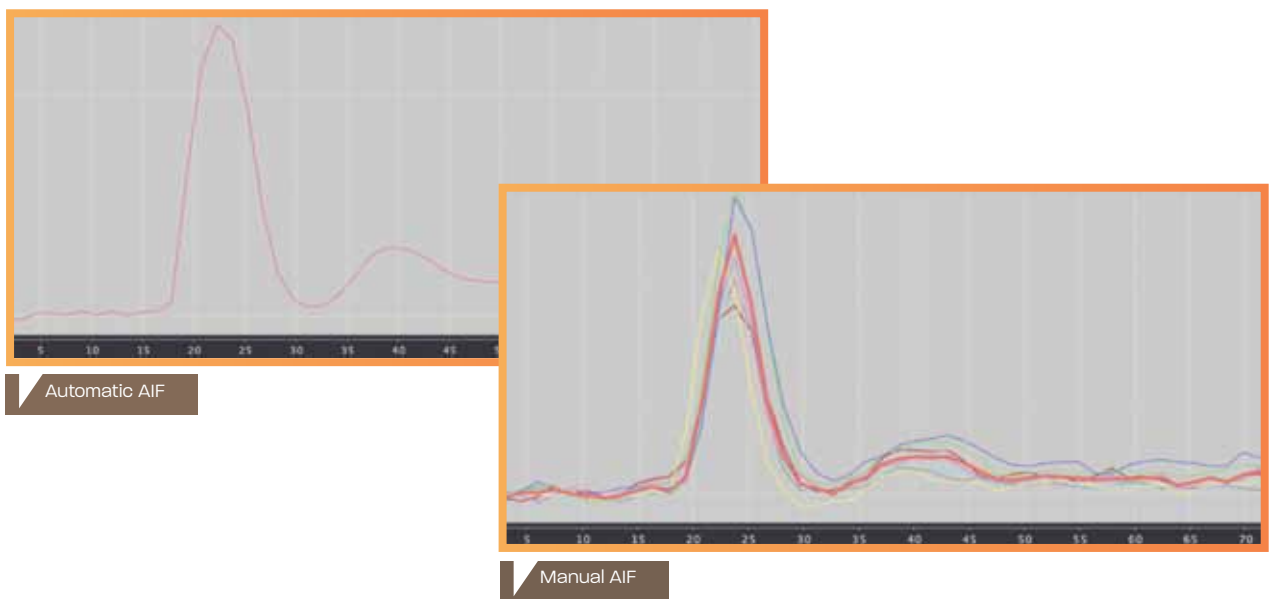
The stroke diagnosis suite is already used in some of the leading institutions worldwide:

- University of Alberta, **CANADA**
- Charité Hospital, **GERMANY**
- La Timone University Hospital, **FRANCE**
- Iwate Medical University, **JAPAN**
- Kyoto Prefectural University of Medicine, **JAPAN**
- Seoul National University Hospital, **SOUTH KOREA**
- Vall d'Hebron Hospital, **SPAIN**
- University Hospitals Case Medical Center, **USA**
- National Institute of Neurological Disorders & Stroke, NINDS/NIH, **USA**
- UMass-Memorial Healthcare, **USA**



PERFSCAPE™ offers the following built-in features:

- **automated intelligent** ROI analysis



- **instant Perfusion** mapping (TTP, MTT, rCBF, rCBV, TMAX) on all slices

- **two deconvolution** methods :

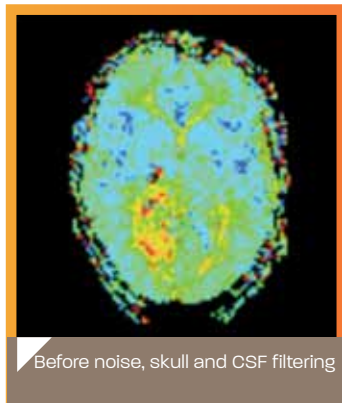
- standard deconvolution method, sSVD
- circular deconvolution method, cSVD

- configuration **on any MRI or PACS system**

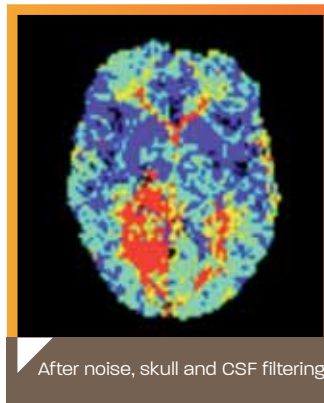
- control and traceability : **capability to open a previously saved study**

- **real-time recalculation** of all parameters for each change

■ **automated** noise, skull and CSF filtering



Before noise, skull and CSF filtering



After noise, skull and CSF filtering

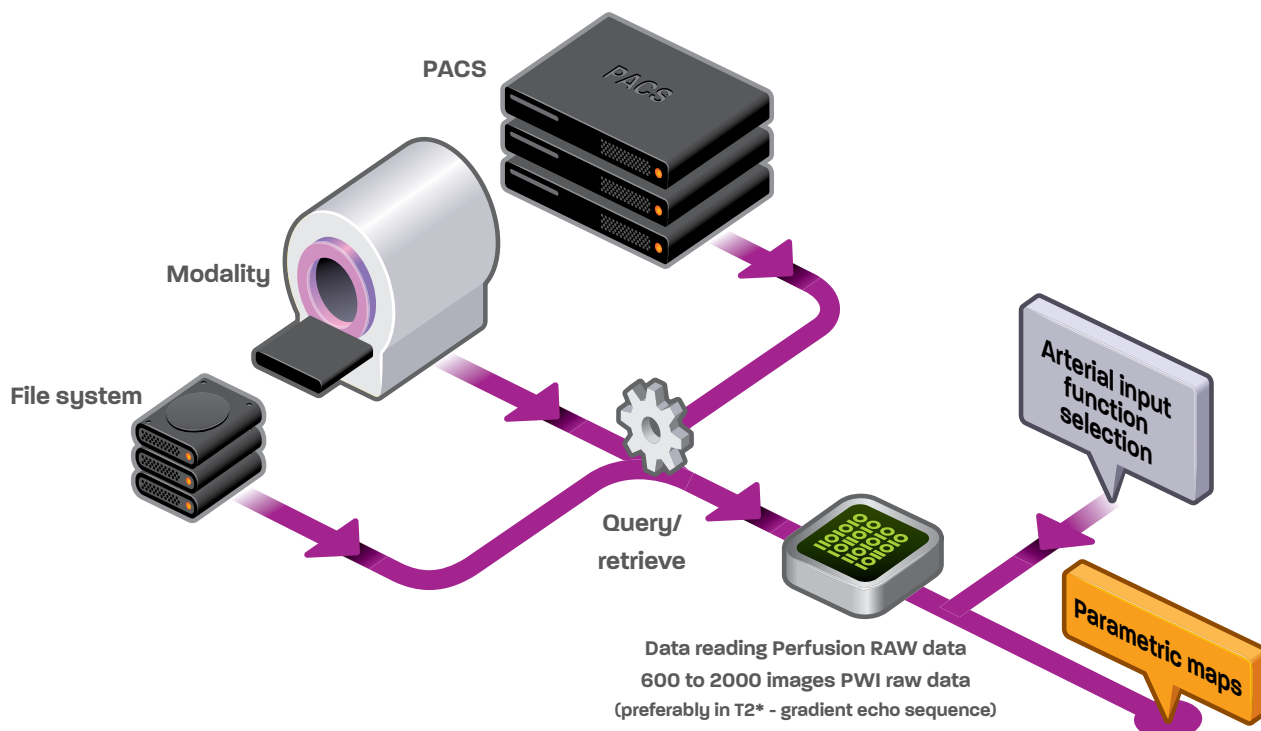
TTP images

PERFSCAPE™: Workflow and Time logs

00.00s: **selection** of the case

02.47s: **RAW data loaded** on the software, once the data is available from the PACS

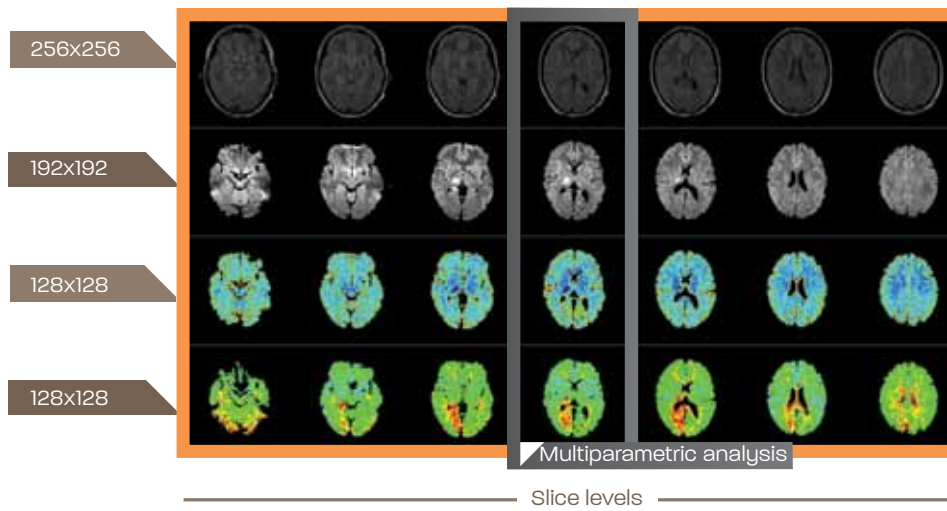
18.76s: **complete analysis done** including manual selection of the arterial input function (AIF), much less with Automatic AIF





NEUROSCAPE™ offers the following built-in features:

- a single dashboard that **simultaneously displays all series** (FLAIR, ADC, B1000 and PWI series)



- **rescaling of all series** to allow precise comparison

- **consistent and customizable** color maps

- automated CSF, noise and skull filtering (**removal of noise**)

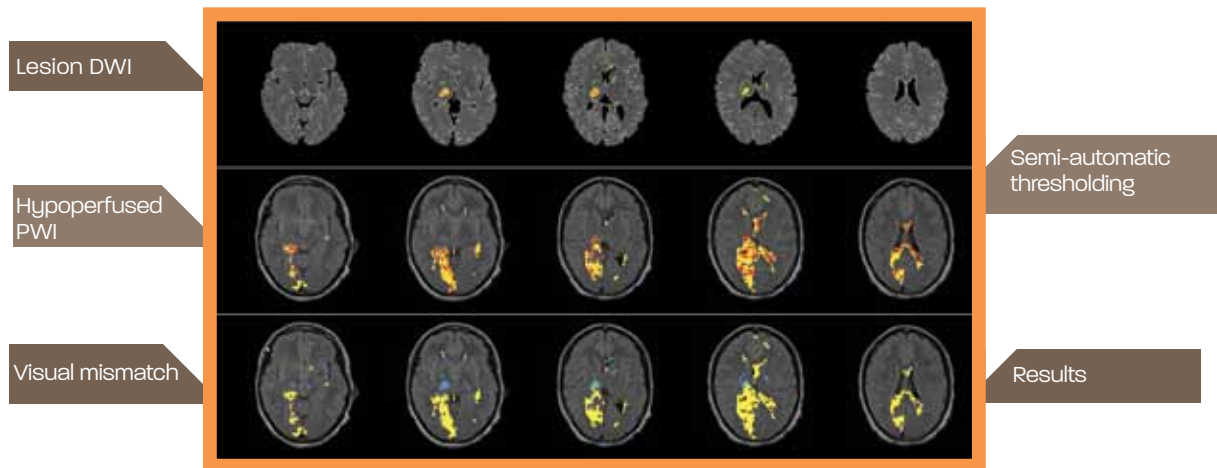


- control and traceability : export to PACS in standard DICOM format and **production of an instant report**

- **TMax FDA-cleared map**, with semi-automated thresholding

- **repeatable** analysis

- visualisation and estimation of **infarct volume, penumbra volume** and **PWI/DWI ratio**

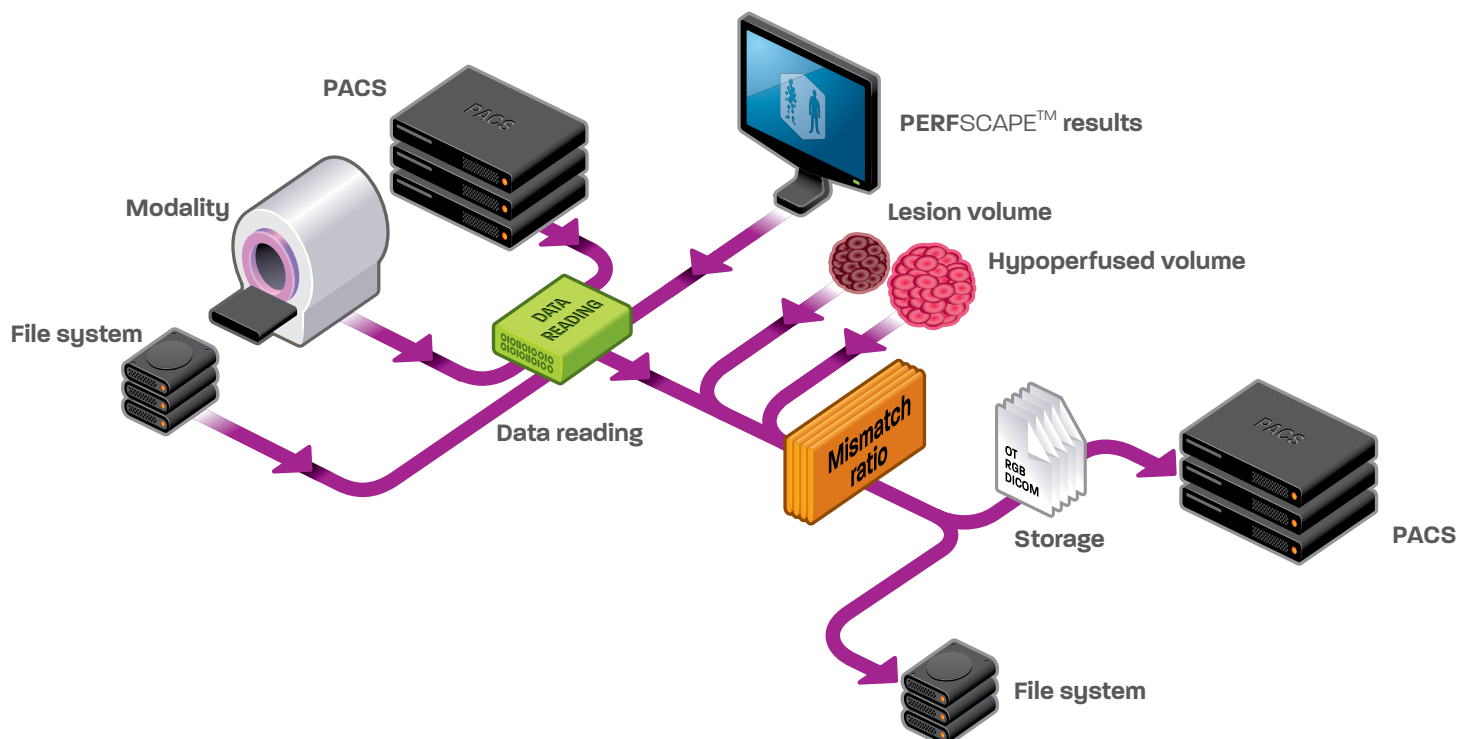


- **configuration** on any MRI or PACS

NEUROSCAPE™: Workflow and Time logs

02.00s: visual **mismatch**

20.00s: estimation of the **lesion volume, hypoperfused volume and mismatch ratio**





Improved diagnosis for life™

Olea Medical

93, avenue des Sorbiers - 13600 La Ciotat - FRANCE
TEL + 33 (0)4 42 71 24 20 - FAX +33 (0)4 42 71 24 27
contact@olea-medical.com
OM-MK-D011-01

www.olea-medical.com